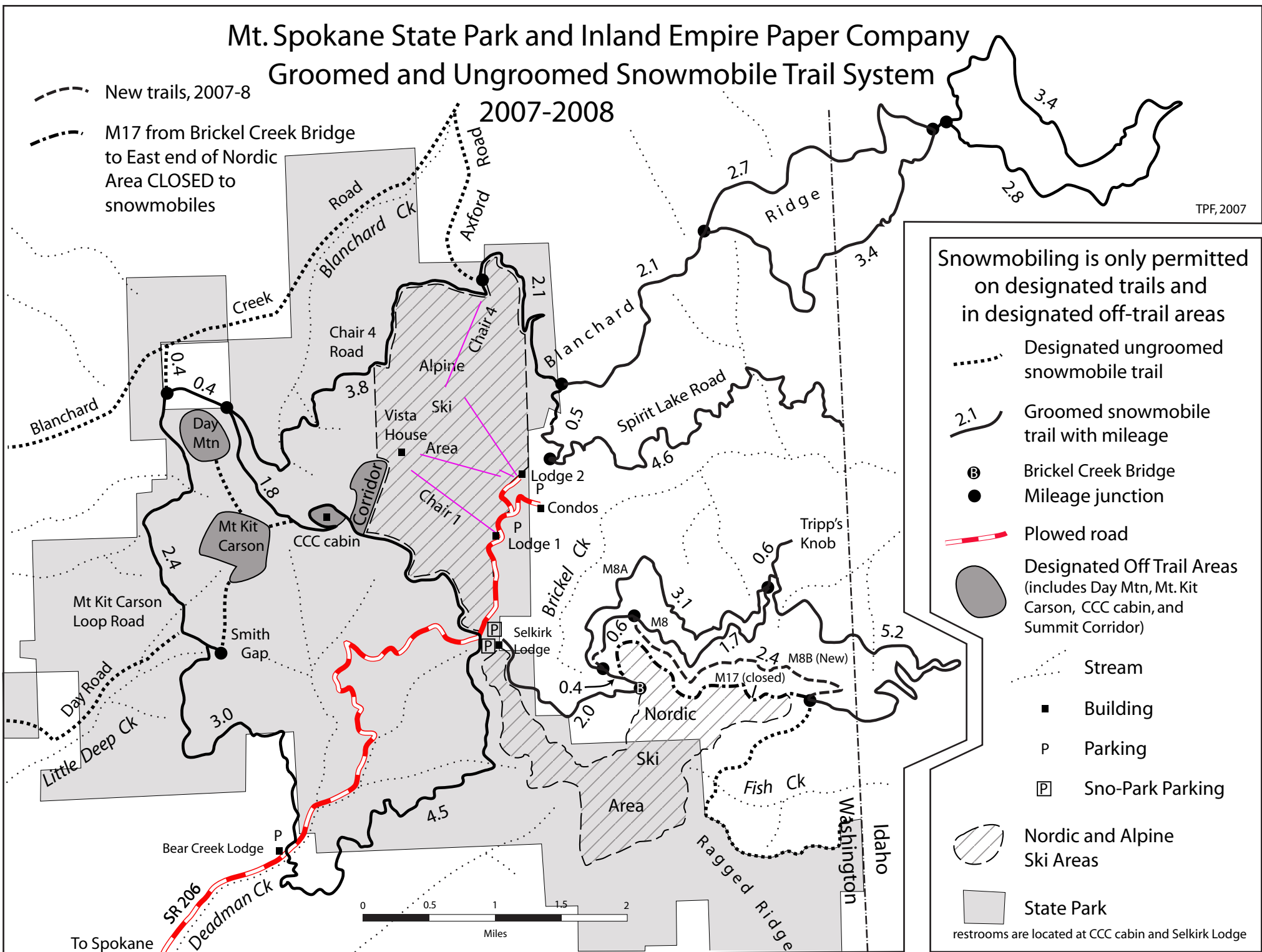


# Mt. Spokane State Park and Inland Empire Paper Company Groomed and Ungroomed Snowmobile Trail System

2007-2008

--- New trails, 2007-8

--- M17 from Brickel Creek Bridge to East end of Nordic Area CLOSED to snowmobiles



TPF, 2007

Snowmobiling is only permitted on designated trails and in designated off-trail areas

--- Designated ungroomed snowmobile trail

2.1 Groomed snowmobile trail with mileage

Ⓟ Brickel Creek Bridge  
● Mileage junction

Plowed road

Designated Off Trail Areas (includes Day Mtn, Mt. Kit Carson, CCC cabin, and Summit Corridor)

--- Stream

■ Building

P Parking

☐ Sno-Park Parking

Nordic and Alpine Ski Areas

State Park

restrooms are located at CCC cabin and Selkirk Lodge